

## CAVITY WALL INSULATION

From the 1930s to the 1990s most new houses were built with an empty cavity in between two layers of bricks. Insulating this cavity can really help you to lock in the heat.

### How is it installed?

By drilling holes in the outer layer of your external walls and blowing insulation into the cavity. The installers shouldn't need access to your property, so long as they can move their equipment freely outside.

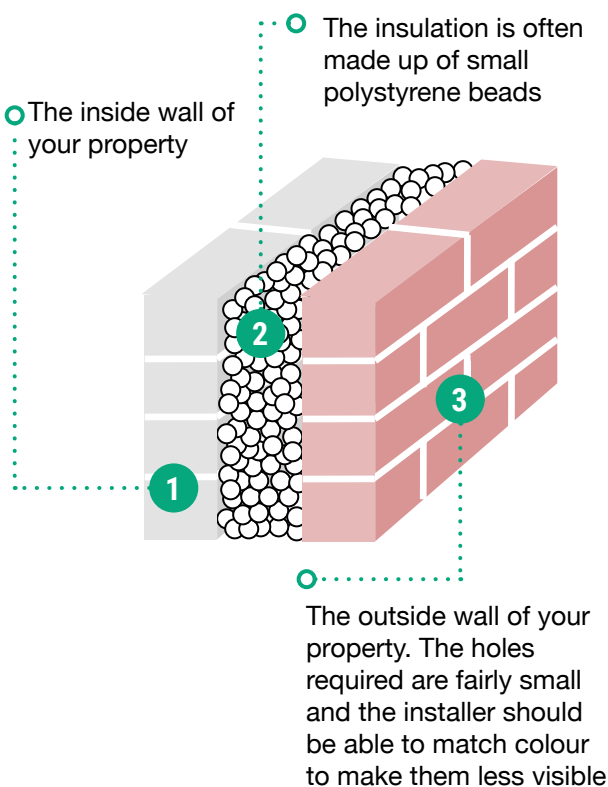
### Can it cause damp?

Not if installed correctly. Your surveyor will check your property for damp. Should you have a pre-existing damp issue you must rectify the situation before proceeding with the insulation otherwise it is possible for damp in the external wall to bridge across the insulation to the internal wall.

Installers now need to submit their planned works for approval by the National Insulation Association in order to ensure property suitability before they can start the work.

### What does it cost?

Many people are eligible for assistance with cavity wall insulation (call us to find out). If not, a typical installation for a semi-detached house is roughly £475 and can save £145 per year, meaning it can pay for itself in about 3 years.



## LOFT INSULATION

Many houses to have insulation installed in their lofts only had a layer approximately 2 inches (50cm) deep. This is now far below the current recommendation of 12 inches (30cm).

### How is it installed?

The installers will need access to your home, and will take rolls of insulation into your loft. Once there the rolls will be laid out flat and put into position. The installers should always leave adequate space at the eaves to ensure the property continues to receive adequate ventilation.

### Can I store belongings on top of it?

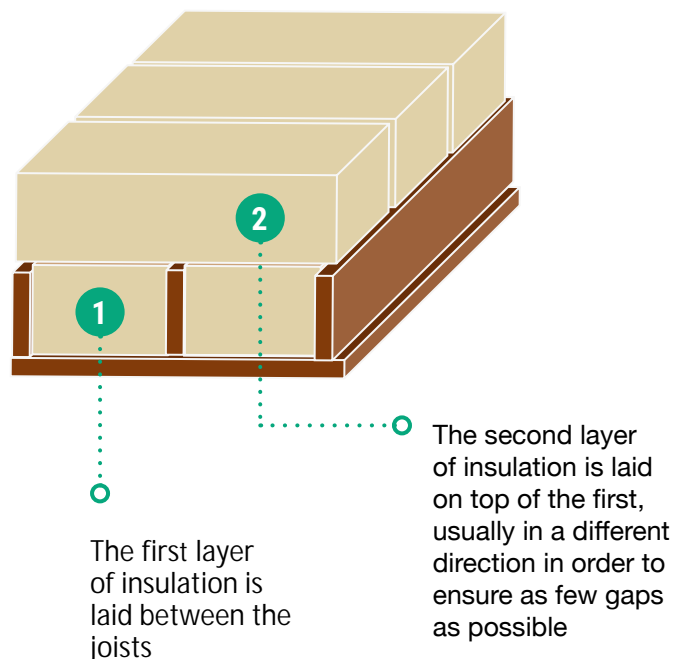
Anything that compresses the insulation reduces its effectiveness, so shouldn't be stored on top. The installers can usually leave a small area uninsulated for storage purposes. If this isn't possible, you may wish to consider installing shelving.

### I have a room in my loft space

You can still insulate your loft, but need different materials that can be installed beneath your roof tiles.

### What does it cost?

Many people are eligible for assistance with loft insulation (call us to find out). If not, a typical installation for a semi-detached house is roughly £300 and can save £130 per year, meaning it can pay for itself within 3 years.



# Solid Wall Insulation

Prior to the 1930s most properties in Britain were built without cavities in the outside walls. These properties can still be insulated, but the insulation has to be applied externally or internally, or a mixture of both.

## INTERNAL WALL INSULATION

Should you be unable or unwilling to cover the outside of your property with insulation, you can have it installed internally.

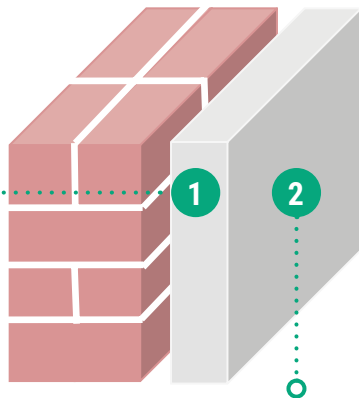
### How is it installed?

By fixing an insulating board to the rear of the external walls of your property. The installers will first remove any skirting boards, plug sockets, curtain rails etc, and reattach these once the insulating boards are in place

### What does it cost?

Internal insulation work can cost from £4,000 to £13,000, depending on the area of walls requiring work. While you may find an installer will provide you a discount for having all of your property treated in one go, several people opt for internal insulation work as and when they come to redecorate each room of their house, thereby spreading out the costs

1 The back is made up of insulating materials approximately 10cm thick.



The front is made of plasterboard. If you need to secure objects to the wall (i.e. hanging pictures) you can still do so, but ensure you use the correct tools for the job. Consult a contractor if you are at all unsure.

## EXTERNAL WALL INSULATION

Often likened to fitting a tea cosy over your property, external wall insulation provides a barrier to the cold in winter and the sun in summer.

### How is it installed?

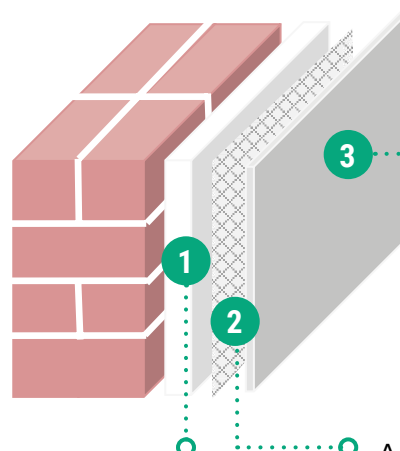
By fixing insulating material (usually polystyrene slabs) to the front of the external walls of your property. The installers will first remove any drainpipes and guttering, and reattach these once the insulation is in place.

### Will it look good?

There are many colours and textures available for external wall insulation, meaning you can choose what your property will look like once the insulation has been installed.

### What does it cost?

External insulation work can cost from £8,000 to £22,000, depending on the area of walls requiring work.



1 A layer of insulating material (often polystyrene) approximately 10cm thick is attached to the brickwork.

2 A metal mesh is added to help hold the insulation in place.

For further information call the Save Energy Advice Line:

**Freephone 0800 043 0151**

**Standard rate phone 0151 637 3670**

**Email [advice@epplus.org](mailto:advice@epplus.org)**

Energy Projects Plus is a registered Charity (No. 1080137)

## ARE THERE ANY GRANTS AVAILABLE?

Solid wall insulation is one of the improvement measures allowed under the government's flagship, ECO (Energy Company Obligation) scheme. However, only a few solid wall insulation jobs are actually carried out each year, so it's unlikely you will be able to find a grant to assist.

If you are interested in using a loan, you may wish to look into the "Green Deal".